

# SAP Learning Program – TASK

Simplified Learning to improve employability

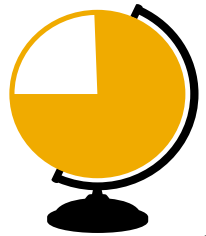
MARCH 2016



**SAP Education**  
Essential for Success.

# About SAP

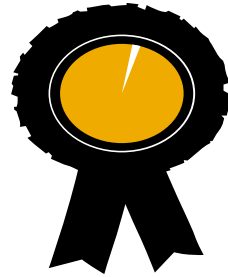
World's largest provider of enterprise application software



## For the world

74%

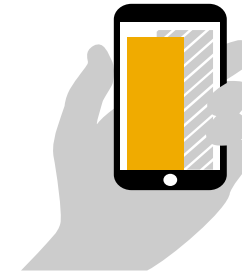
of the world's transaction revenue touches an SAP system



## For business

98%

SAP customers represent 98% of the top 100 most valued brands in the world



## For People

97%

Mobile solutions from SAP reach 97% of the world's mobile subscribers via text messaging

25

industries

11

lines of business

74,406

employees

87%

of Forbes Global 2000

98%

of the 100 most valued brands

100%

of Forbes top sustainability companies

80%+

are SME companies



**THE cloud company powered by SAP HANA**



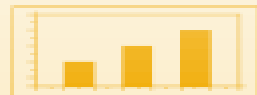
**Fastest-growing database vendor**



**Fastest-growing company at scale in the cloud**



**Market leader for mobile apps for business**



**Market leader in products for business analysis**



**SAP HANA is the market leading platform for real-time computing**

# SAP INDIA

6500+ Customers

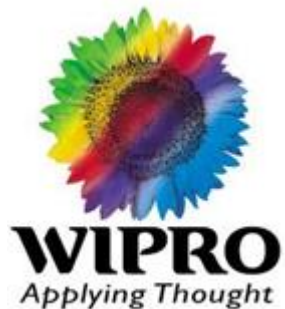


11 out of 16 "Navratnas" run SAP

# SAP INDIA PARTNERS- PARTIAL LIST

---

1600+ SERVICES & TECHNOLOGY PARTNERS



# SAP Education

## Scale and Innovation

### Engineering Graduates

Enhanced career options from ONLY B.E/ B.Tech to **B.Tech + SAP**

**~500,000** individuals trained annually

**~420,000** people certified

**200+** premium University/Colleges associate Across the World

### Management Graduates

Equipped with training on management tools like Analytics and ERP to improve employability

**SAP EDUCATION**  
Leader in Worldwide IT Training & Education\*

Training provided in **~60** countries

### Commerce Graduates

Proficiency in contemporary Financial & Accounting Principals and gateway for career in IT Industry and Core Jobs

**250+** courses available in Learning hub Student Edition

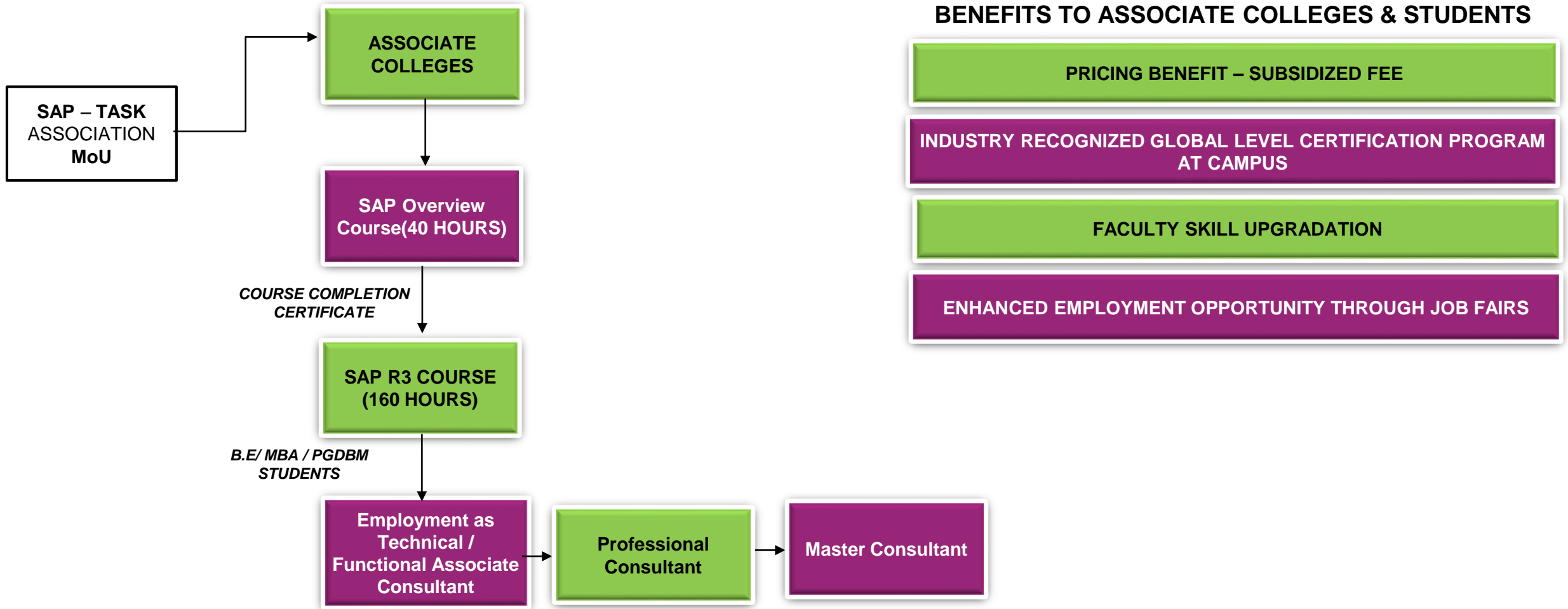
# Outcome of SAP Employability Program

---

## Improve Employability Index of Students

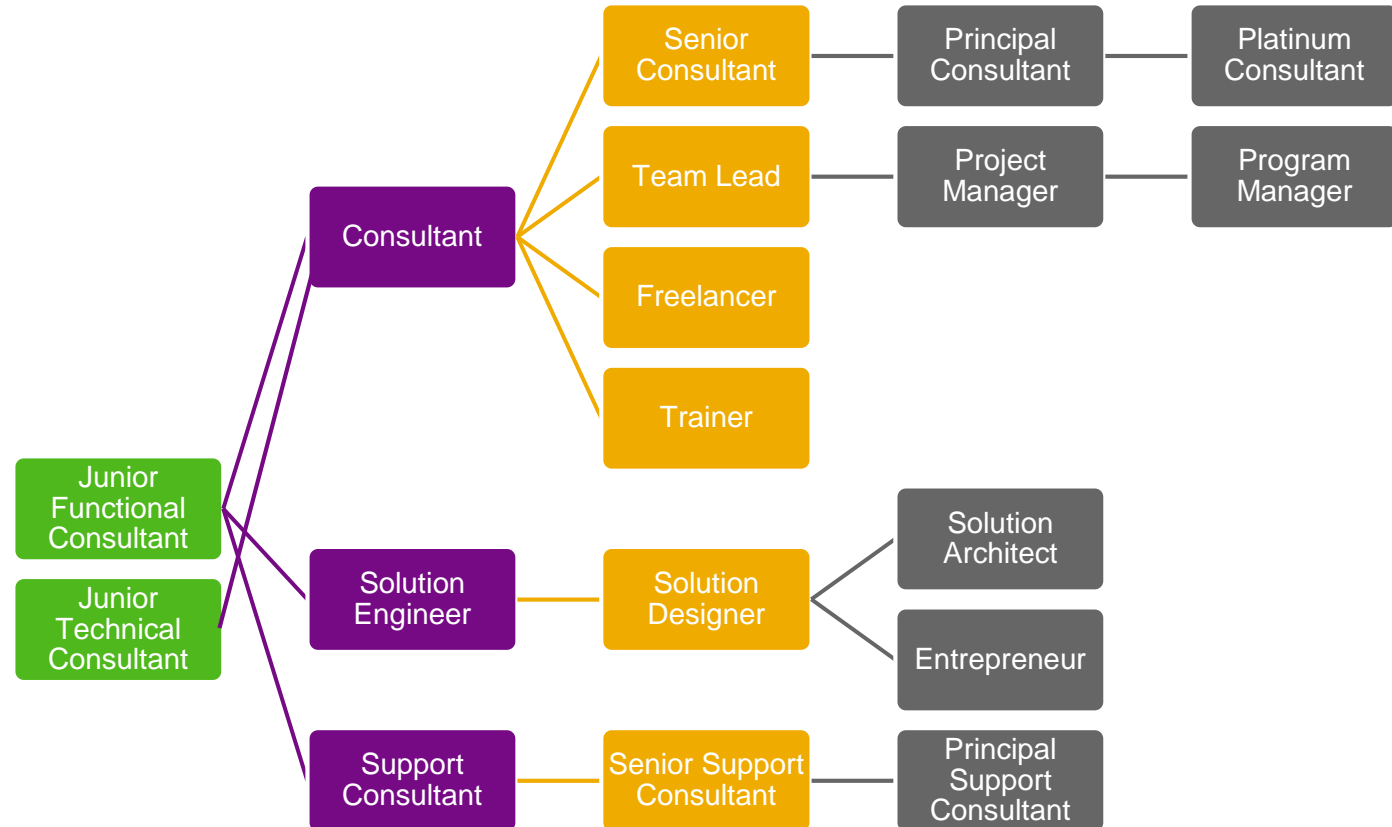
- ✓ Address the rapid industrial growth demands of the state
- ✓ Bridging the Academics – Industry gap
- ✓ Create a sustainable and financially independent workforce in the state
- ✓ Build Knowledge based Economy with cost effective program from World's best IT Company

# OFFERING TO TASK ASSOCIATED COLLEGES



# Career Options

- Consulting
- Support
- Sales / Pre Sales
- Project Management
- Training





# Commercials – OPTION 1

STREAM	COURSE NAME	DURATION	Number of Students	Fee
ENGINEERING	SAP Overview Course + SAP ABAP	200 Hours	120	Rs 12,00,000* +VAT
	SAP Overview Course + SAP MM	200 Hours		

STREAM	COURSE NAME	DURATION	Number of Students	Fee
MBA	SAP Overview Course + SAP FI	200 Hours	120	Rs 12,00,000* +VAT
	SAP Overview Course + SAP SD	200 Hours		

- Train the Trainer for 5 Faculty
- 5 Faculty LH logins
- 60 Questionmark Perception License
- 1 Industry Expert visit to Campus

**Cost of Program in Retail Market is Rs 1,70,000 + Taxes**

*\* Applicable on Minimum college signups*

# Commercials – OPTION 2

STREAM	COURSE NAME	DURATION	Number of Students	Fee
ENGINEERING	SAP Overview Course + SAP ABAP	200 Hours	240	Rs 18,00,000 +VAT
	SAP Overview Course + SAP MM	200 Hours		

STREAM	COURSE NAME	DURATION	Number of Students	Fee
MBA	SAP Overview Course + SAP FI	200 Hours	240	Rs 18,00,000 +VAT
	SAP Overview Course + SAP SD	200 Hours		

- Train the Trainer for 10 Faculty
- 10 Faculty LH logins
- 120 Questionmark Perception License
- 1 Industry Expert visit to Campus

**Cost of Program in Retail Market is Rs 1,70,000 + Taxes**

*\* Applicable on Minimum college signups*

# Thank You

## For More Info Contact

- Mr. Tulasi Ram – [tulasi.ram@sap.com](mailto:tulasi.ram@sap.com) +9742692262
- Mr. Phillip Samuel – [s.babu@sap.com](mailto:s.babu@sap.com)

